



**Produktblätter**

***Noppenwabe 2014***  
***Nap Core***

**Noppenwabe** C1-654-T06-065/94

Textile	100% Polyester
Resin	Cyanate Ester
Height	6,5 mm
Volume Weight	94 kg/m <sup>3</sup>
Maximum Size	590 mm x 590 mm, length x width



**Noppenwabe** C1-743-S06-10/62

Textile	80% Aramid, 20% Polyester
Resin	Cyanate Ester
Height	10 mm
Volume Weight	62 kg/m <sup>3</sup>
Maximum Size	endless x 120 mm, length x width
Special	New Geometry



**Noppenwabe** C1-743-T10-05/77

Textile	80% Aramid, 20% Polyester
Resin	Cyanate Ester
Height	5 mm
Volume Weight	77 kg/m <sup>3</sup>
Maximum Size	1450 x 1400 mm, length x width



**Noppenwabe** C1-750-T06-10/49

Textile	50% Aramid, 50% Polyester
Resin	Cyanate Ester
Height	10 mm
Volume Weight	49 kg/m <sup>3</sup>
Compression Strength	290 kPa
Compression Modulus	10,0 MPa
Maximum Size	590 mm x 590 mm, length x width



**Noppenwabe** C1-M212-T06-09/35

Textile	100% Aramid
Resin	Cyanate Ester
Height	9 mm
Volume Weight	35 kg/m <sup>3</sup>
Compression Strength	250 kPa
Compression Modulus	12,8 MPa
Shear Strength	130 MPa
Shear Modulus	3,6 MPa
Maximum Size	590 mm x 590 mm, length x width
Special	Very Low Volume Weight



**Noppenwabe** C2-003010-Q08-05/76

Textile	100% Polyester
Resin	Cyanate Ester
Height	5 mm
Volume Weight	76 kg/m <sup>3</sup>
Compression Strength	1.780 kPa
Compression Modulus	43,7 MPa
Maximum Size	440 mm x 350 mm, length x width
Special	Good Mechanical Performance



**Noppenwabe** C2-743-Q06-07/105

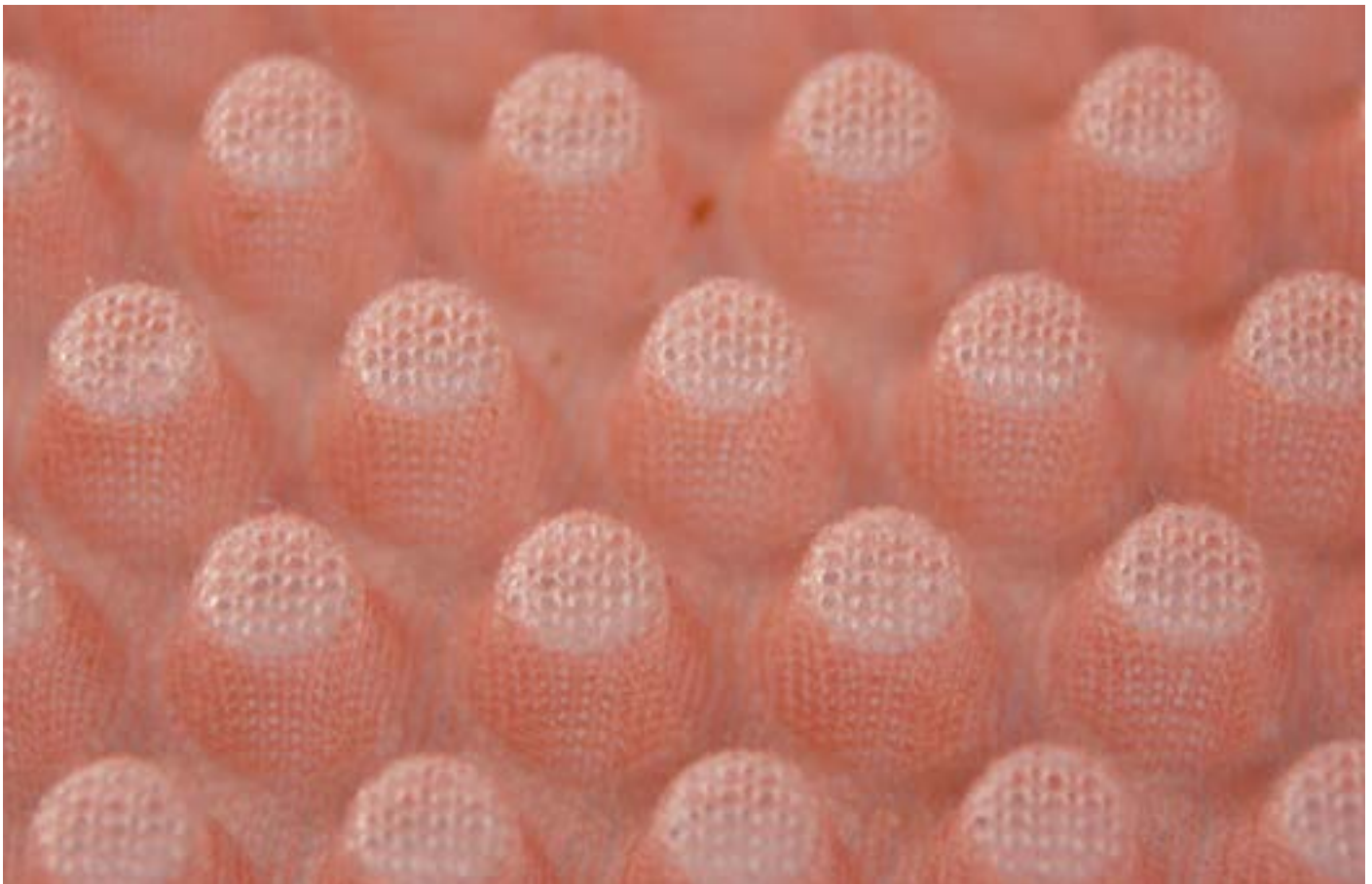
Textile	80% Aramid, 20% Polyester
Resin	Cyanate Ester
Height	6,5 mm
Volume Weight	118 kg/m <sup>3</sup>
Compression Strength	1.750 kPa
Compression Modulus	27,1 MPa
Maximum Size	450 mm x 360 mm, length x width





**Noppenwabe** E1-M212-T06-10/42

Textile	100% Pyrotex®
Resin	Epoxy
Height	10 mm
Volume Weight	42 kg/m <sup>3</sup>
Maximum Size	590 mm x 590 mm, length x width



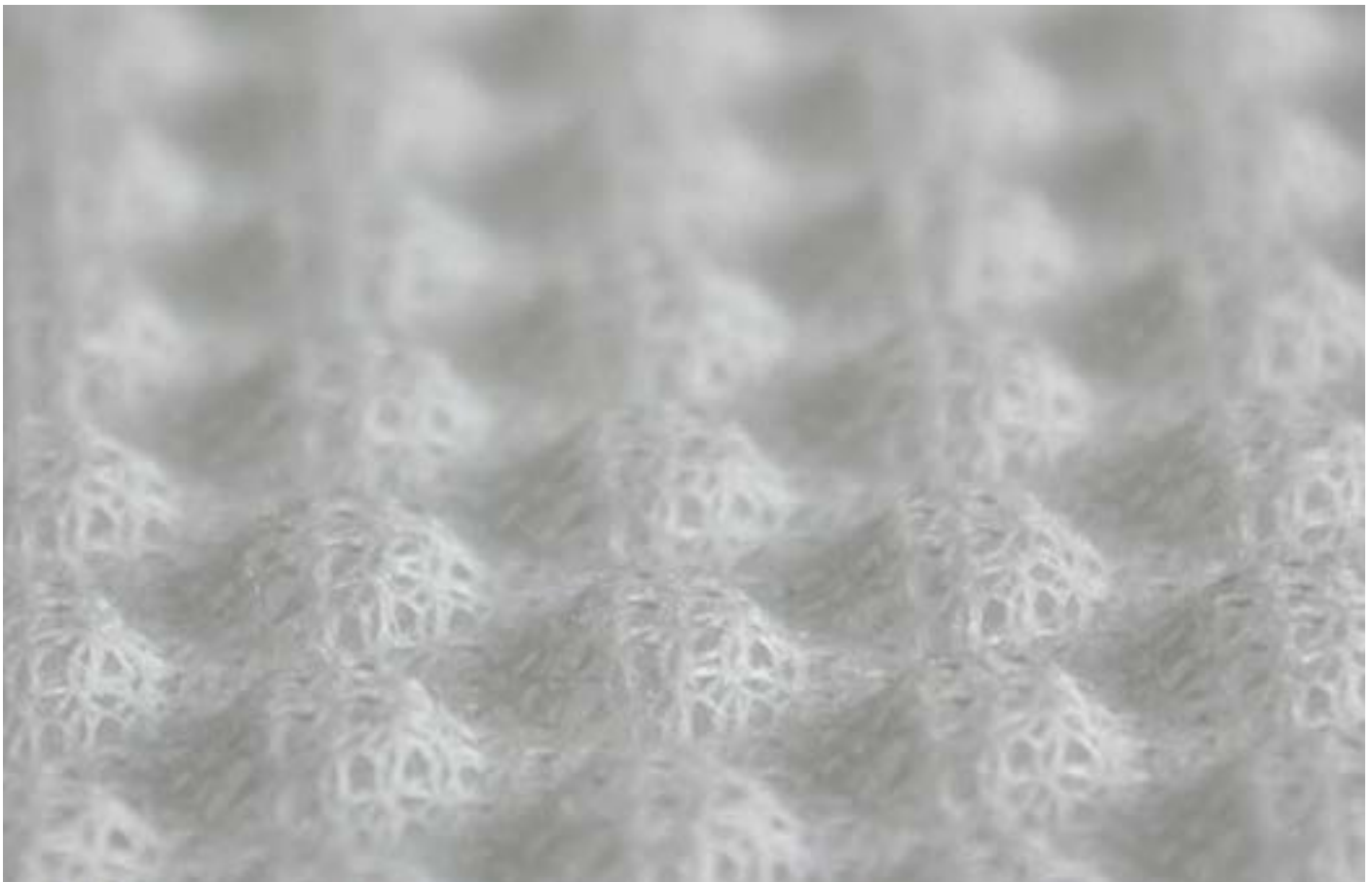
**Noppenwabe** E2-003010-T06-03/77 (53%)

Textile	100% Polyester
Resin	Epoxy
Height	3 mm
Volume Weight	77 kg/m <sup>3</sup>
Maximum Size	590 mm x 590 mm, length x width



**Noppenwabe** E2-750-T06-03/57 (48%)

Textile	50% Aramid, 50% Polyester
Resin	Epoxy
Height	3 mm
Volume Weight	57 kg/m <sup>3</sup>
Maximum Size	590 mm x 590 mm, length x width



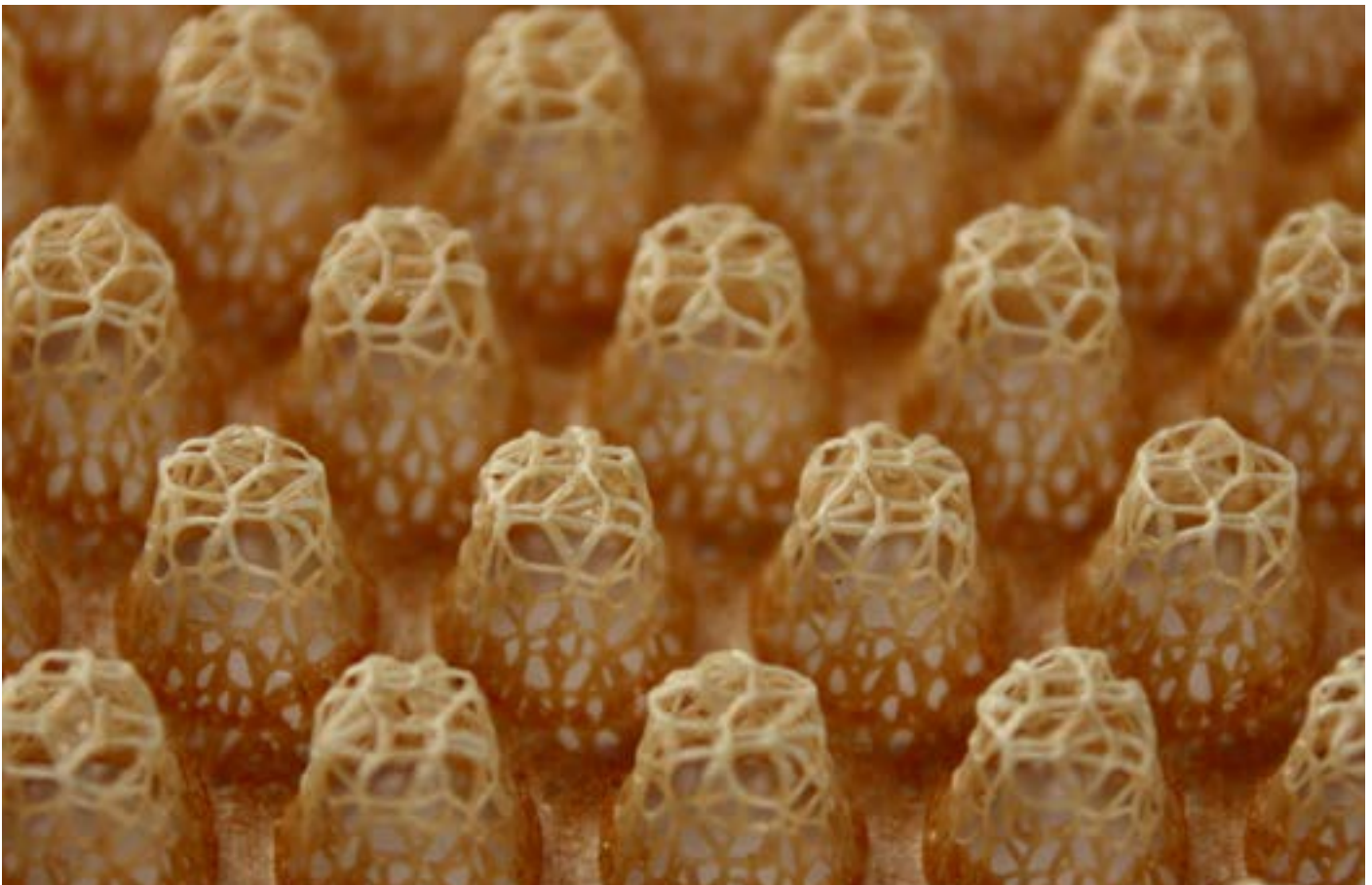
**Noppenwabe** P1-654-T06-065/60

Textile	100% Polyester
Resin	Phenolic Formaldehyde
Height	6,5 mm
Volume Weight	60 kg/m <sup>3</sup>
Maximum Size	590 mm x 590 mm, length x width



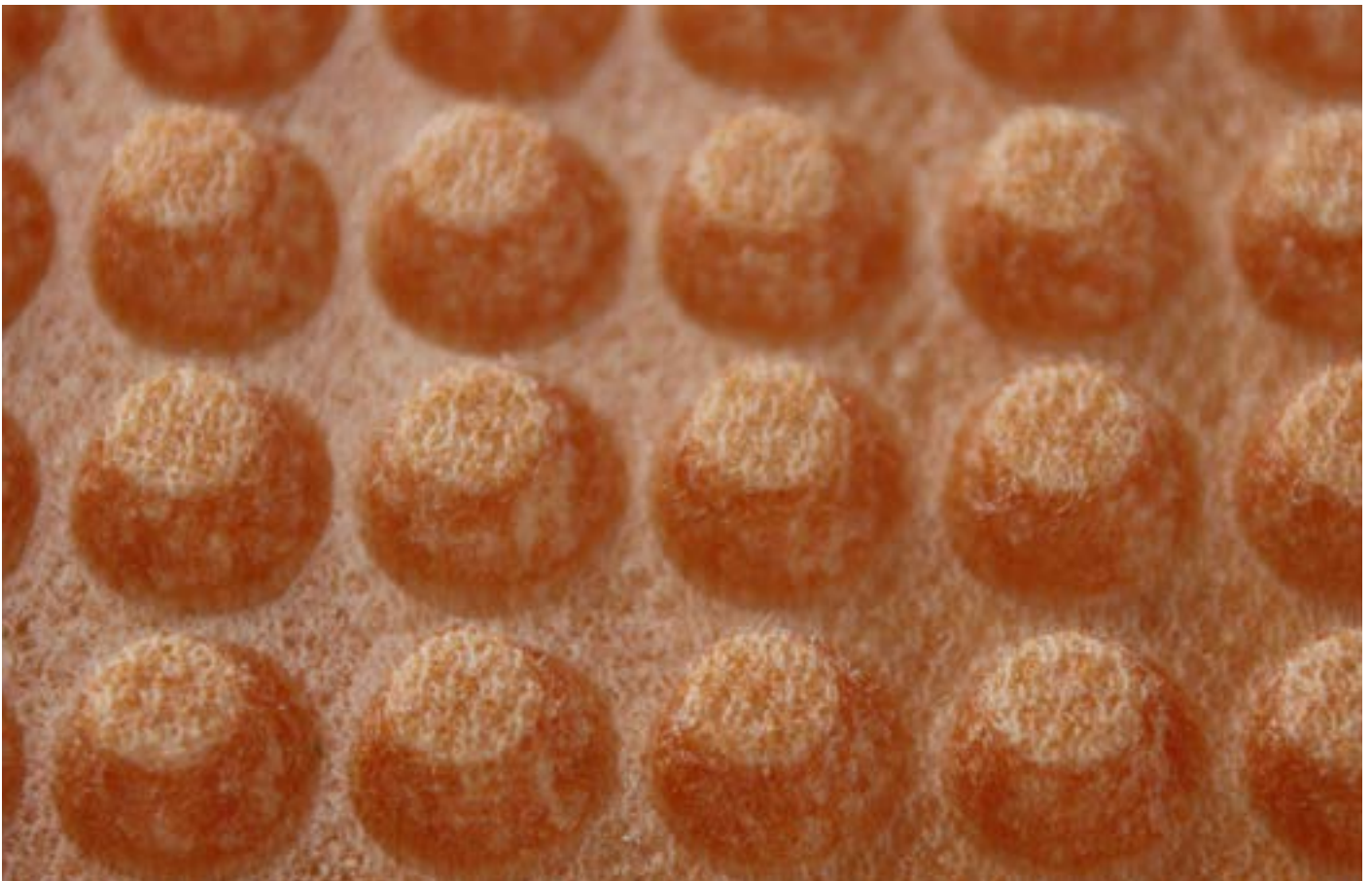
**Noppenwabe** P1-654-T06-10/52

Textile	100% Polyester
Resin	Phenolic Formaldehyde
Height	10 mm
Volume Weight	52 kg/m <sup>3</sup>
Shear Strength	60 kPa
Shear Modulus	2,9 MPa
Maximum Size	590 mm x 590 mm, length x width
Special	Good Price Performance Ratio



**Noppenwabe** P1-743-Q06-065/79

Textile	80% Aramid, 20 % Polyester
Resin	Phenolic Formaldehyde
Height	6,5 mm
Volume Weight	79 kg/m <sup>3</sup>
Maximum Size	450 mm x 360 mm, length x width



**Noppenwabe** P1-743-T06-09/58

Textile	80% Aramid, 20 % Polyester
Resin	Phenolic Formaldehyde
Height	9 mm
Volume Weight	58 kg/m <sup>3</sup>
Compression Strength	280 kPa
Compression Modulus	15,9 MPa
Shear Strength	210 kPa
Shear Modulus	8,8 MPa
Maximum Size	590 mm x 590 mm, length x width



**Noppenwabe** P1-743-T10-09/53

Textile	80% Aramid, 20 % Polyester
Resin	Phenolic Formaldehyde
Height	9 mm
Volume Weight	53 kg/m <sup>3</sup>
Compression Strength	270 kPa
Compression Modulus	11,9 MPa
Maximum Size	1450 mm x 1200 mm, length x width





**Noppenwabe** P1-Efit-T10-07/74 (23%)

Textile	100% Glass
Resin	Phenolic Formaldehyde
Height	7 mm
Volume Weight	74 kg/m <sup>3</sup>
Maximum Size	1450 mm x 1100 mm, length x width



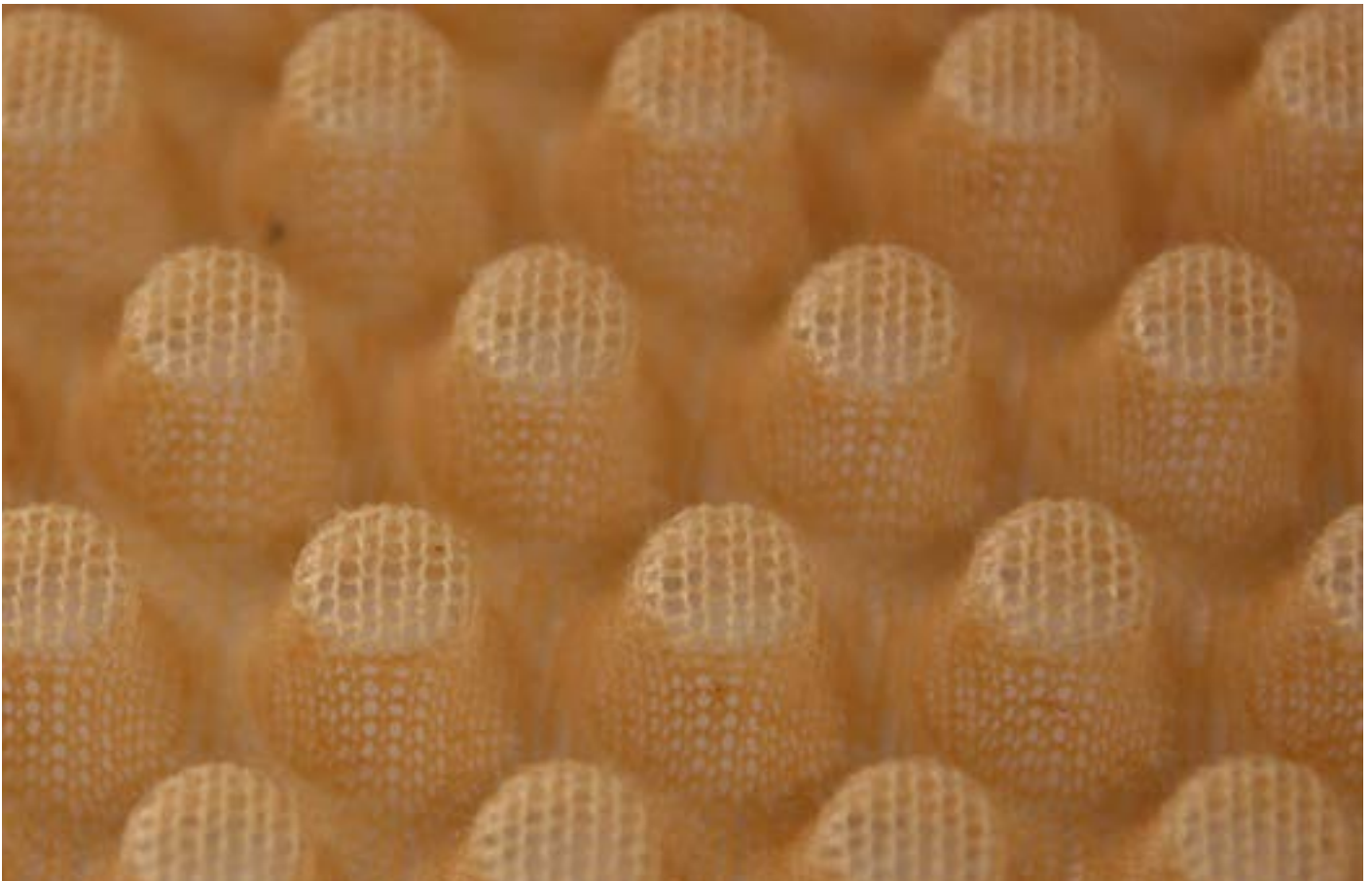
**Noppenwabe** P1-M212-T06-04/36

Textile	100% Aramid
Resin	Phenolic Formaldehyde
Height	4 mm
Volume Weight	36 kg/m <sup>3</sup>
Maximum Size	590 mm x 590 mm, length x width



**Noppenwabe** P1-M212-T06-075/30

Textile	100% Aramid
Resin	Phenolic Formaldehyde
Height	7,5 mm
Volume Weight	30 kg/m <sup>3</sup>
Maximum Size	590 mm x 590 mm, length x width
Spezial	Very low Volume Weight



**Noppenwabe** P1-M212-T10-04/38

Textile	100% Aramid
Resin	Phenolic Formaldehyde
Height	4 mm
Volume Weight	38 kg/m <sup>3</sup>
Maximum Size	1450 mm x 1000 mm, length x width



**Noppenwabe** P2-M212-T06-09/33 (51%)

Textile	100% Aramid
Resin	Phenolic Formaldehyde
Height	9 mm
Volume Weight	33 kg/m <sup>3</sup>
Maximum Size	590 mm x 590 mm, length x width

